

MOUNTING MACHINES FOR THE FLEXIBLE INDUSTRY AND PRE-PRINT CORRUGATED INDUSTRY

PLUS MOUNTER SERIES



*Mount-O-Matic 1500 MK II
with sleeve changer on the right hand side (optional)*





MOUNT-O-MATIC 2000 PLUS AND MOUNT-O-MATIC 2500 PLUS

The Mount-O-Matic 2500 Plus and the Mount-O-Matic 2500 Plus are a highly sophisticated computer operated mounting machines for the medium and wide-web flexo printing industry. It is developed for those customers with extremely high demands as to quality, speed and consistency. Special widths are available on request.

AV Flexologic Mount-O-Matic technology

The Mount-O-Matic 2500 Plus is provided with the well tested Flexologic software and fitted with a mounting table, 2 controlled high-resolution cameras, one split-screen monitor with very high magnification of mounting marks.

By means of the computer the printing length (repeat) of the cylinder can be divided into equal parts or into mm or inches. This way the cylinder width can also be divided into mm or inches. The mounting marks of the printing plates to be mounted are set width-ways and cylinder circumference-ways, whereupon the cameras and cylinder are moved automatically to the exact position.

The printing plates can be positioned extremely fast and precise by using the table. The height of the table is set to a standard level to which the movements of the camera's and the cylinders or sleeves have been adjusted. Once the operator has brought the plate into position on the flat table the cylinder will move upwards, and the

plate will adhere to the tape. This ensures a consistent and a perfect in register fixation of the plate and quick and smooth mounting of the next plates. The system is equipped with harmonic drives for a very high accuracy and therefore repeatability, even for the biggest repeats.

The computer has a storage capacity of > 10.000 cylinders.

The machine is equipped with the Overlay function. See the special insert on Overlay for further details.

OPTIONS.

For the options proofing cylinder, sleeve changer, cutting knife, tape holder, mounting table, vacuum on mounting table, overlay function and software features, see the special options insert.

FEATURES

- Computer with AV Flexologic software for operating the system and for downloading information of registermarks from an external database
- Shear endless capacity for storage of printing jobs
- Windows software for user friendly usage
- Automatic moving cameras for exact and easy positioning
- Automatic rotating repeat for exact and easy positioning
- High magnification for clear display on monitor of the register mark
- High quality cameras for true image

OPTI SHAFT

The Opti Shaft series is a unique, and perfect solution for both the medium and wide-web flexo printing industry and the flexible packaging industry. It is developed for those customers who want to have the possibility to mount on cylinders as well as on sleeves.

For the mounting on cylinders this machine is equipped with the AV Flexologic Mount-O-Matic technology and Mirror system. For a detailed description on the AV Flexologic Mount-O-Matic technology please refer to the Mount-O-Matic 2500 Plus.

Mirror system

The semi-reflecting mirror is used when mounting is done directly from the die-cut drawing on the impression cylinder. During manual mounting the operator uses the view on the monitor of the two high magnification cameras, mounted above and looking through the mirror. This eliminates the Parallax effect. The monitor shows the combination of the image of the proof on the proofing cylinder and the position of flexo plates on the print cylinder.

For mounting sleeves, this machine is equipped with a unique direct drive clamp construction for format cylinders (see picture).

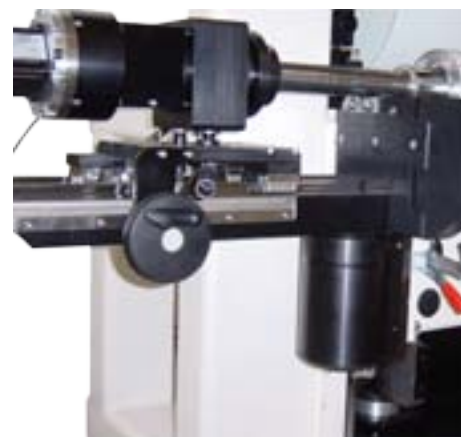
A proofing cylinder with digital adjustment for a perfect proof comes standard with this machine. After mounting, the plate cylinder is automatically brought to the right position for pulling a proof. The print nip on the left hand side and on the right hand side can, if necessary, be set and adjusted by increasing or decreasing the pressure to either side.

OPTIONS.

For the options cutting knife, tape holder overlay function and software features, see the special insert on those items.

FEATURES

- Computer with AV Flexologic software for operating the system and for downloading information of registermarks from an external database
- Shear endless capacity for storage of printing jobs
- Windows software for user friendly usage
- Automatic moving cameras for exact and easy positioning
- Automatic rotating repeat for exact and easy positioning
- High magnification for clear display on the monitor of the register mark
- High quality cameras for true image
- Cameras on rail for plate size adjustability
- Automatic cradle
- Shaft changer
- Direct drive
- Gearless shaft changer



MOUNT-O-MATIC 1500 MK II, MOUNT-O-MATIC 1500 MK II SPECIAL, MOUNT-O-MATIC 2000 MK II AND MOUNT-O-MATIC 2000 MK II SPECIAL

The Mount-O-Matic 1500 MK II, the Mount-O-Matic 2000 MKII, the Mount-O-Matic 1500 MK II Special and the Mount-O-Matic 2000 MK II Special are mounting machines for mounting flexo plates on cylinders as well as on sleeves. For details on cylinder mounting see the Mount-O-Matic 2500 plus. For mounting onto sleeves this machine is equipped with a simple to operate device; a standard sleeve changer on the left hand side. Sleeves can be changed in a fast and simple way. A more sophisticated sleeve changer on the right hand side and a cones system come as options.

According to the size of the plate cylinder, the table can be moved vertically up from min. 230 mm to max. 1000 mm. The height is adjusted once only by means of a hand wheel and an indication scale to the desired circumference of the plate cylinder. For the 2nd, 3rd and further colours (cylinders), click on next, and the following colours can be mounted to the next cylinders in the exact same position.

For the options proofing cylinder, cutting knife, tape holder, sleeve changer, mounting table, vacuum on mounting table, overlay function and software features, see the special insert on those items.

FEATURES

- Computer with AV Flexologic software for operating the system and for downloading information of registermarks from an external database.
- Shear endless capacity for storage of printing jobs
- Windows software for user friendly usage
- Automatic moving cameras for exact and easy positioning
- Automatic rotating repeat for exact and easy positioning
- High magnification for clear display on the monitor of the register mark
- High quality cameras for true image



Sleeve changer on the right hand side (optional)



Cones system (optional)



Mount-O-Matic 1500 MK II with sleeve changer on the right hand side (optional)



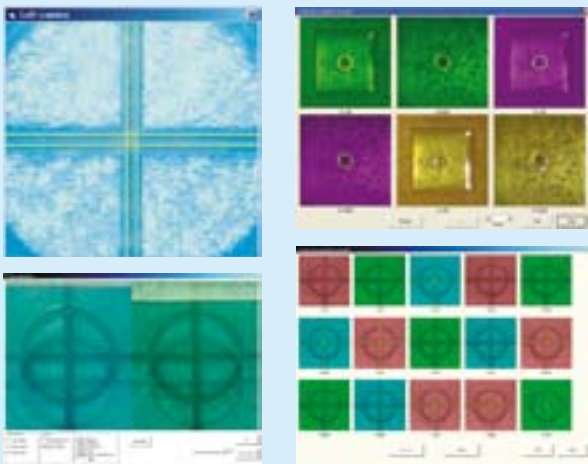
Sleeve changer on the left hand side (standard version)

OPTIONS

(Please refer to the table at the back of this brochure to see which options apply to which machines).

Overlay function

This highly sophisticated precision tool was invented and patented by AV Flexologic B.V. The overlay function is based on the principle that the first colour/plate is used as a reference for the next colours/plates. Once the first plate is in the right position, this module enables the operator to take and store a screenshot of the microdots or any part of the design as a reference point on the plates, which is then shown on the monitor. Whilst mounting the next plates, this picture is displayed in a faded way on the monitor as a reference point for the operator. The operator simply has to position the reference points of the next plate(s) over it (overlay) in exactly the same position. The system enables snapshots to be taken and stored of these second and next plates as well, which can serve as a digital proof for quality control purposes before printing. The Overlay module provides a magnification of 20 to a 100 times. Several hairline types are available as different microdots might need different hairlines. The picture on the monitor can be adjusted for outside light influences such as brightness, gamma, sharpness, shutter, white balance and gain.



Advantages of the overlay module

- Easy, accurate and efficient
- Time saving of at least 50%
- Easy to retrieve proof
- Printed digital proof
- Less mistakes
- No ink proof necessary
- Higher accuracy
- No cross-mark needed
- Cost reduction
- Any part of the design can serve as reference point.

Proofing cylinder

A proofing cylinder with digital adjustment for a perfect proof. In this case, after mounting, the plate cylinder is automatically brought to the right position for pulling a proof. This is done automatically. The print nip on the left hand side and on the right hand side can, if necessary, be set and adjusted by increasing or decreasing the pressure to either side.

Sleeve or shaft changer

A so-called sleeve changer or shaft changer with electronic shaft for easy lifting the air cylinder (mandrel) from the support bearings, can be mounted to the Mount-O-Matic 1500 MK II, Mount-O-Matic 1500 MK II Special, the Mount-O-Matic 2000 MK II, Mount-O-Matic 2000 MK II Special and the Opti Shaft. There are 3 versions: the standard version with the sleeve changer on the left hand side; the advanced version with the sleeve changer on the right hand side and a cone system for sleeve change. The electronic shaft is the perfect tool for a gearless, very accurate register.

Cutting knife

The circular knife is especially designed for cutting plates and tape on the cylinder, which makes it impossible to cut into the cylinder. The stability of the knife makes it very accurate and therefore easier to make a cut in two directions, both circular and parallel to the cylinder. The knife has its own guide and runs exactly parallel to the cylinders.

Tape holder

The tape holder makes it easier to apply the sticky back onto the cylinder. The tape holder system is mounted between the supports and moves absolutely parallel in reference to the cylinder.

Drawing Pen

The pen draws auxiliary lines on the proofing paper, in order to check the positioning of the printing form on the printing medium. One would like to know for instance, if the printing form stays within the borders of the paper, or if the printing form does not exceed the die cut form of the carton to be printed.

Mounting Table

Available for the Mount-O-Matic 2500 plus, for the Mount-O-Matic 1500 MK II plus and the Mount-O-Matic 2000 MK II plus.

Vacuum on mounting table

Plug-Ins

Through the excellent networking capability in combination with the plug-in feature, Av Flexologic offers the corrugated board industry a maximum automation of the pre-press job preparation and efficient and accurate mounting. In an early stage, the designer determines the position of the register marks. An import function can transfer the data of these positions stored in a MoM file to the mounting machines.

Learning Function

The learn option enables you to read coordinates and use them as a guidance for the new plates to be mounted. The coordinates will be stored automatically so they can be used in the future.

Offline filling database option

An offline filling database option is a light version of the mounting program that enables the input of new jobs from a different place. The mounting machine does not have to stop producing during the input of a new job.

FULLY AUTOMATIC MOUNTING MACHINE (FAMM)[®]

This patented machine has been especially developed for those customers who demand the highest standards. Repeatability, accuracy and speed are extremely good compared to conventional mounting, giving a quick return on investment. There is no need for manual handling. The quality reporting is digital. The operator positions the plates on a conveyor belt.

The mounting mark is recognised and the plate is automatically positioned. This machine can replace 3 to 4 conventional mounting machines.

The FAMM takes the plates to the right position by means of a state off the art vision recognition system, and mounts the plates.



OPTIONS		Sleeve changer Left hand side (standard version)	Sleeve changer Right hand side (advanced version)	Cone system for sleeve change	Drawing pen	Proofing cylinder	Mounting Table	Vacuum on mounting table	Cutting knife	Tape Holder	Overlay	Software Options
<input type="checkbox"/>	Mount-O-Matic 2000 plus				<input type="checkbox"/>	<input type="checkbox"/>	<input type="checkbox"/>	<input type="checkbox"/>	<input type="checkbox"/>	<input type="checkbox"/>	<input type="checkbox"/>	<input type="checkbox"/>
<input type="checkbox"/>	Mount-O-Matic 2500 plus				<input type="checkbox"/>	<input type="checkbox"/>	<input type="checkbox"/>	<input type="checkbox"/>	<input type="checkbox"/>	<input type="checkbox"/>	<input type="checkbox"/>	<input type="checkbox"/>
<input type="checkbox"/>	Opti Shaft	<input type="checkbox"/>	<input type="checkbox"/>	<input type="checkbox"/>	<input type="checkbox"/>	<input type="checkbox"/>			<input type="checkbox"/>	<input type="checkbox"/>	<input type="checkbox"/>	<input type="checkbox"/>
<input type="checkbox"/>	Mount-O-Matic 1500 MK II	<input type="checkbox"/>	<input type="checkbox"/>	<input type="checkbox"/>	<input type="checkbox"/>	<input type="checkbox"/>	<input type="checkbox"/>	<input type="checkbox"/>	<input type="checkbox"/>	<input type="checkbox"/>	<input type="checkbox"/>	<input type="checkbox"/>
<input type="checkbox"/>	Mount-O-Matic 1500 MK II special	<input type="checkbox"/>	<input type="checkbox"/>	<input type="checkbox"/>	<input type="checkbox"/>	<input type="checkbox"/>	<input type="checkbox"/>	<input type="checkbox"/>	<input type="checkbox"/>	<input type="checkbox"/>	<input type="checkbox"/>	<input type="checkbox"/>
<input type="checkbox"/>	Mount-O-Matic 2000 MK II	<input type="checkbox"/>	<input type="checkbox"/>	<input type="checkbox"/>	<input type="checkbox"/>	<input type="checkbox"/>	<input type="checkbox"/>	<input type="checkbox"/>	<input type="checkbox"/>	<input type="checkbox"/>	<input type="checkbox"/>	<input type="checkbox"/>
<input type="checkbox"/>	Mount-O-Matic 2000 MK II	<input type="checkbox"/>	<input type="checkbox"/>	<input type="checkbox"/>	<input type="checkbox"/>	<input type="checkbox"/>	<input type="checkbox"/>	<input type="checkbox"/>	<input type="checkbox"/>	<input type="checkbox"/>	<input type="checkbox"/>	<input type="checkbox"/>
<input type="checkbox"/>	FAMM											

Optional Standard in machine

Facts	Mount-O-Matic 2000 plus	Mount-O-Matic 2500 plus	Opti Shaft	Mount-O-Matic 1500 MK II	Mount-O-Matic 1500 MK II special	Mount-O-Matic 2000 MK II	Mount-O-Matic 2000 MK II special	FAMM
Max cylinder width	2.500 mm/98.42"	2.500 mm/98.42"	2.500mm/98.42"	1.500 mm/59.05"	1.500 mm/59.05"	2.000 mm/78.74"	2.000 mm/78.74"	According to client's specification
Max. print length	1.300 mm/51.18"	1.300 mm/51.18"	1.300 mm/51.18"	1.300mm/51.18"	1.300mm/51.18"	1.300 mm/51.18"	1.300 mm/51.18"	According to client's specification
LxWxH	3.600x1.900x2.000 mm/141.73x74.80x78.74"	3.600x1.900x2.000 mm/141.73x74.80x78.74"	3.600x1.900x2.000 mm/141.73x74.80x78.74"	2.420x1.390x1.500 mm/95.27x54.72x59.05"	2.420x1.390x1.500 mm/95.27x54.72x59.05"	3.600x1.300x1.900 mm/141.73x51.18x74.8"	3.600x1.300x1.900 mm/141.73x51.18x74.8"	
Electrical connection	230 V, 1 phase, 50 Hz, 5 Amp. or according to specification	230 V, 1 phase, 50 Hz, 5 Amp. or according to specification	230 V, 1 phase, 50 Hz, 5 Amp. or according to specification	230V, 1 phase, 50 Hz, 4 Amp. or according to specification	230V, 1 phase, 50 Hz, 4 Amp. or according to specification	230 V, 1 phase, 50 Hz, 4 Amp. or according to specification	230 V, 1 phase, 50 Hz, 4 Amp. or according to specification	380 V, 50 Hz, 18 Amp
Connection compressed air	6 to 8 bar	6 to 8 bar	6 to 8 bar	6 to 8 bar	6 to 8 bar			6 to 8 bar /10litres /hour
Net weight	± 200 kg	± 200 kg	± 200 kg	± 1.000 kg	± 1.000 kg	± 1.000 kg	± 1.000 kg	± 5000 kg



T: 866.282.7697 • F: 800.223.6869
www.AndersonVreeland.com • info@AndVre.com